



# Transflow

## PROCESS SYSTEMS

(An ISO 9001 : 2015 Certified Company)



Corrosion Solution with Fluoropolymers

[www.transflow.in](http://www.transflow.in)

# Transflow

## PROCESS SYSTEMS

"Since 2006, more than 500 satisfied clientele worldwide, your partner for corrosive or high purity chemical processing"

Transflow Process Systems Pvt Ltd (formerly known as Transflow Asia) an ISO 9001:2015 certified, a professionally managed company, is one of the fastest growing manufacturing firm located at Vadodara, Gujarat.

We at Transflow Process Systems Pvt. Ltd., a team of Jaydatt Shah and Om Shah started our journey in the processing industry from 2001. We have been working for years in the chemical and petrochemical processing industry. We founded Transflow Asia in 2006 and started serving customers, processing corrosive and high purity media. In the beginning our supplies were limited to PTFE products and accessories of glass lined reactors, after couple of years considering market potential we developed entire product range of PTFE and PTFE lined pipes, fittings and valves from 1" to 24" sizes.

In 2016, we decided to change the constitution of our company from a Partnership to a Private Limited entity. As explained the company was well known as "Transflow Asia" which is now known as "Transflow Process Systems Pvt. Ltd.

Today, having two state of the art in manufacturing facilities and a team of experienced professionals, Transflow blends in extensive plastic moulding with ASTM F1545 and ASME Section VIII Code metal capability to bring you piping and valve system from small to large diameter through various special techniques, ranging from unmatched fluoropolymer moulding and welding technology. We are continually developing new products with advancement of current and materials.

Transflow has wide range of products and equipment used for handling high purity, aggressive and corrosive media is the result of years of experience in the application on PTFE, FEP, PFA, PVDF, and HDPE lined products. We are proud to share that, our products are successfully performing in Chemical, Oil & Petro-Chemical and Pharmaceutical, Dairy and other processing industries and meeting international standards. Transflow is established name as trusted manufacturing partner in the local and international market for small to large projects including complete new set up or upgradation of plants.

\*Specifications are Subject to Change without Notice. Dimensions are indicative & Informative Only.

## Major Applications :

Chemical Industries  
 Oil & Petro-Chemical Industries  
 Pharma & Biotech Processing Plants  
 Nuclear & Power Generation  
 Refining & Petrochemicals  
 Pesticides, Paper & Pulp  
 Chloroalkyl Manufacturing  
 Agrochemicals  
 High Purity Semi-Conductor  
 Waste Water Treatment  
 Dairy / Food Equipment / Processing Machinery

## Our Product range :

PURE PTFE and PTFE / HDPE / FEP / PFA / PVDF Lined Products,  
 Including Antistatic PTFE / FEP / PFA Lining

### Lined Pipes & Fittings (CS / SS 304 / SS 316)

FEP / PFA Lined headers  
 FEP / PFA Lined Y type strainer  
 PTFE Lined flexible hose pipe & metal bellows

### Lined valves (CS / SS 304 / SS 316)

Ball Valve / Flush Bottom Valve  
 Butterfly Valve / Diaphragm Valve  
 Non Return Valve / Plug Valve / Sampling Valve  
 Jacketed Ball Valve / Jacketed Plug Valve

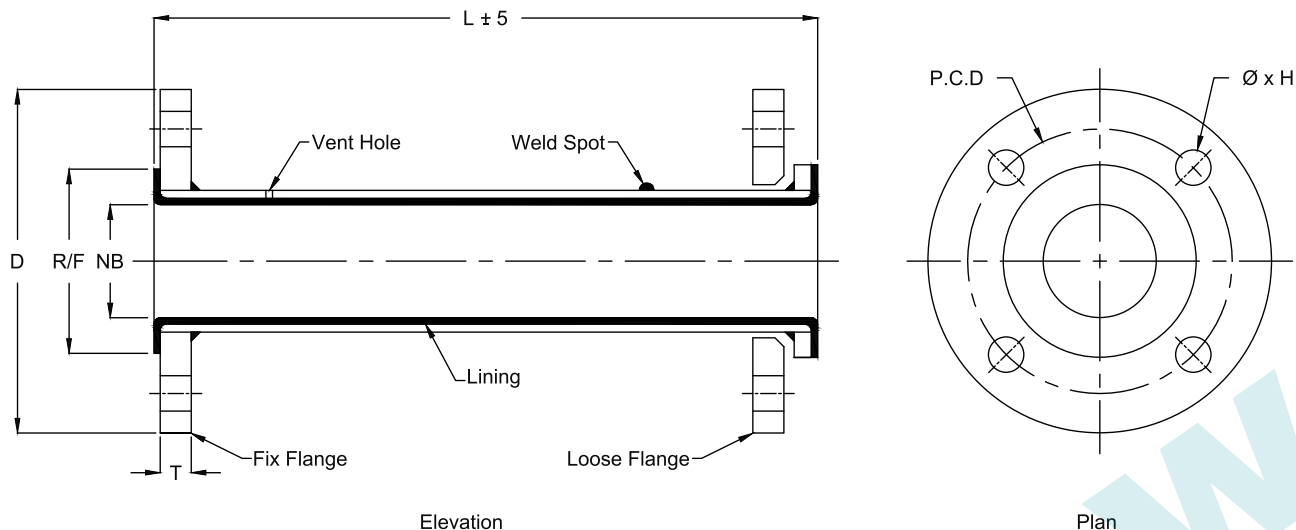
### PTFE products (up to 24" size)

Bellows for high pressure & vacuum applications (size 1" to 24")  
 Valve bellows / Line bellows / PTFE 'O' Ring  
 Distributors / Redistributors  
 Tube sheet set for glass heat exchanger (Up to 12" size)  
 Bush / Rod / Sheet / Liner / PTFE Pipe / Sparger  
 PTFE Agitators (Lab scale)  
 Pure PTFE Customized Products

### Glass lined reactor accessories

PTFE Nozzle liners / Solid bush for GLR nozzles  
 PTFE envelop gaskets / Expanded PTFE gaskets  
 PTFE Lined Dip Pipe / Feed Pipe / J- Pipes / Sparger  
 PTFE Lined thermo-well  
 FEP / PFA Lined Manhole Cover Assembly  
 PTFE Lined agitator

# LINED PIPE



Dimension detail			
Size		Lining Thickness	Length ± 5mm
NB	Inch	± 0.5mm	Maximum LG
25	1"	3	3000
40	1½"	3.5	3000
50	2"	3.5	3000
80	3"	4	3000
100	4"	5	3000
150	6"	6	3000
200	8"	7	1000
250	10"	7	1000
300	12"	7	1000
350	14"	9	1000
400	16"	9	1000

Flange dimension detail (MM) ( ANSI CLASS 150# )					
R/F	P.C.D	D	T	No. of Hole ( N )	Hole Dia. ( Ø )
50.8	79.4	108.0	14.5	4	15.9
73.0	98.4	127.0	17.5	4	15.9
92.1	120.7	152.4	19.5	4	19
127.0	152.4	190.5	24.0	4	19
157.2	190.5	228.6	24.0	8	19
215.9	241.3	279.5	25.5	8	22.2
269.9	298.5	342.9	29.0	8	22.2
323.9	362.0	406.4	30.5	12	25.4
381.0	431.8	482.6	32.0	12	25.4
412.5	476.2	533.4	35.0	12	28.6
469.9	539.7	596.9	36.5	16	28.6

**Specification :**

Pipe: ASTM A106 Gr. B (CS Pipe Seamless Sch. 40)  
 ASTM A312 TP 304 / TP316 (SS Pipe Seamless Sch. 40)

Flange: IS 2062 / ASTM A105 / ASTM A351 Gr. CF8 / CF8M

Lining: PTFE / HDPE / PP / PVDF

Additional Lining: Antistatic PTFE

Inspection & Testing: ASTM F1545-97

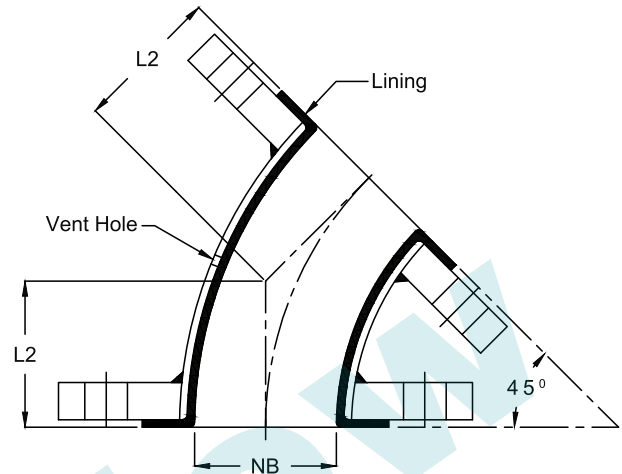
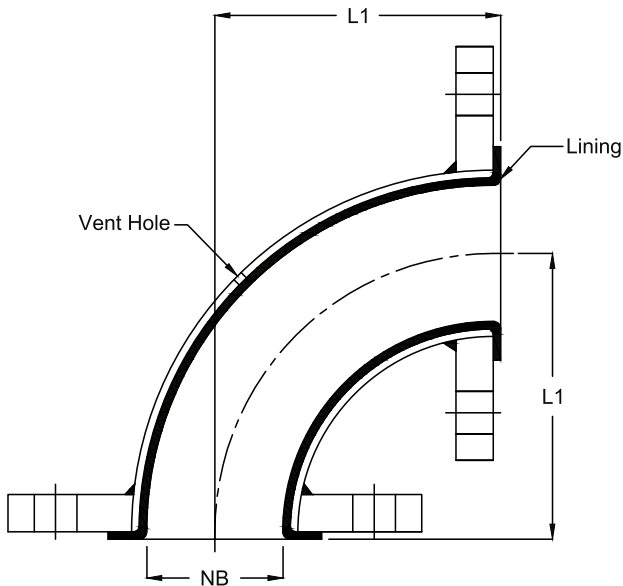
Hydraulic Test: 29 Kg/Cm<sup>2</sup>

Spark Test: 15 Kv





# LINED BEND



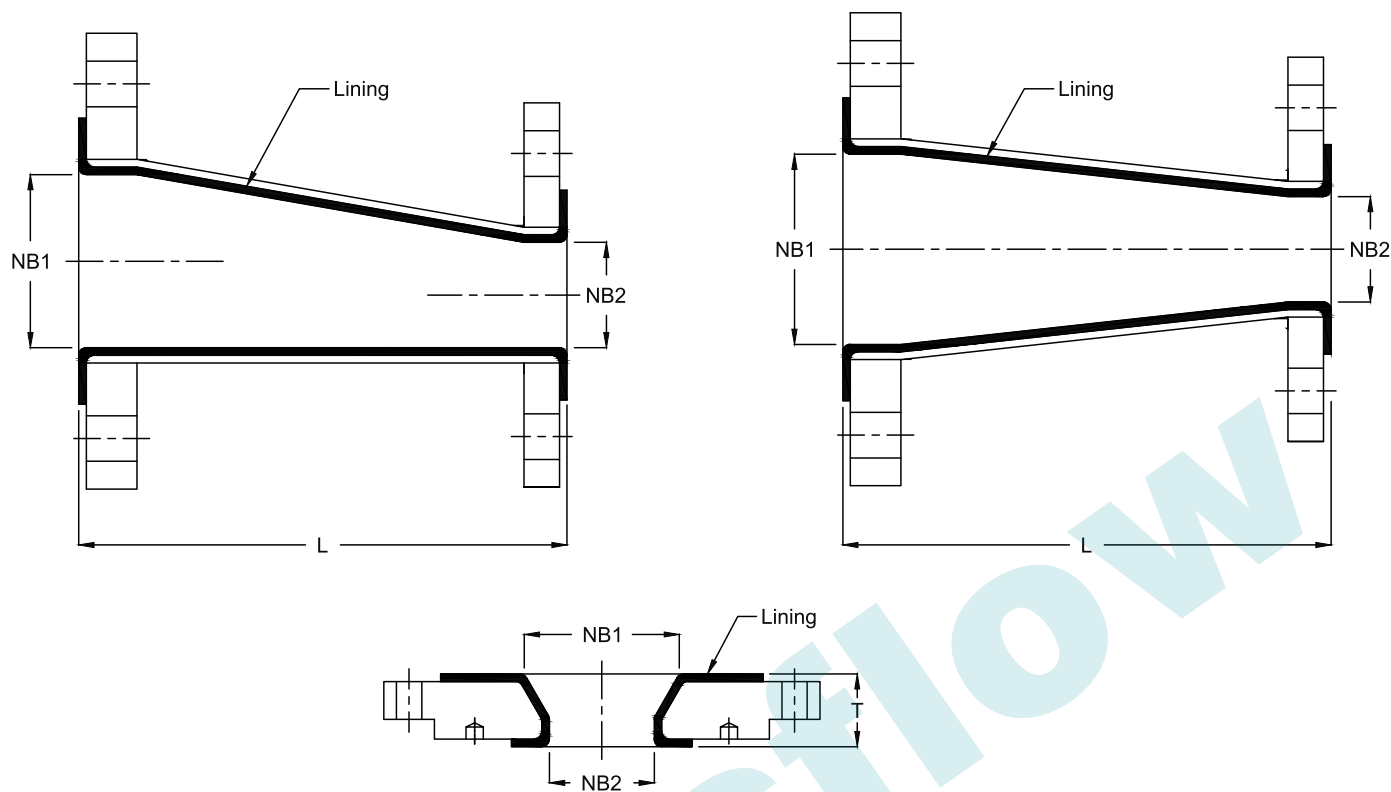
Dimension detail			
Size			
NB	Inch	L1	L2
25	1"	89	45
40	1½"	102	57
50	2"	114	64
80	3"	140	76
100	4"	165	102
150	6"	204	127
200	8"	228	140
250	10"	279	165
300	12"	305	190

**Specification:**

- Body: • ASTM A234 Gr. WPB (Steel Fabricated)
- Cast Steel ASTM A216 Gr. WCB
- With Flange as per ASTM A105 / IS 2062
- Flange: ANSI B16.5 CLASS ASA 150#
- Optional: Bend with Rotating Flange
- Face To Face: ANSI B16.5 #150
- Lining: PTFE / PFA / HDPE / PP / PVDF
- Additional Lining: Antistatic PTFE
- Lining Thickness: 3mm to 7mm
- Inspection & Testing: ASTM F1545-97
- Hydraulic Test: 29 Kg/Cm<sup>2</sup>
- Spark Test: 15 Kv



# LINED REDUCER & REDUCING FLANGE



Dimension detail			
NB1	NB2	L	T
25	20	114	35
40	25	114	35
50	25	127	35
50	40	127	35
80	25	152	35
80	40	152	45
80	50	152	45
100	25	178	45
100	40	178	45
100	50	178	45
100	80	178	45
150	25	229	54
150	40	229	54

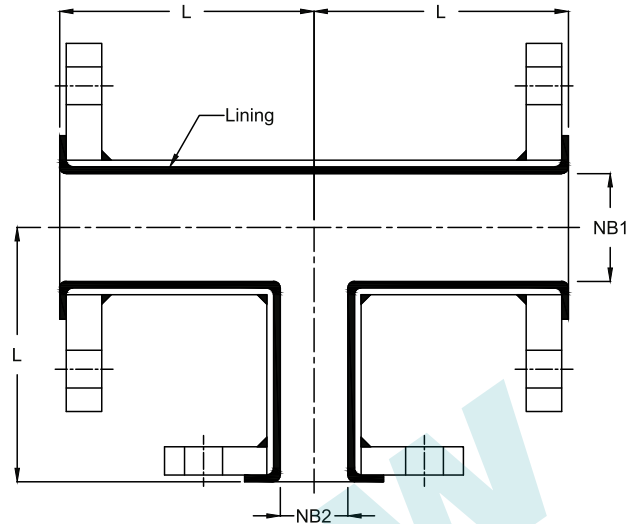
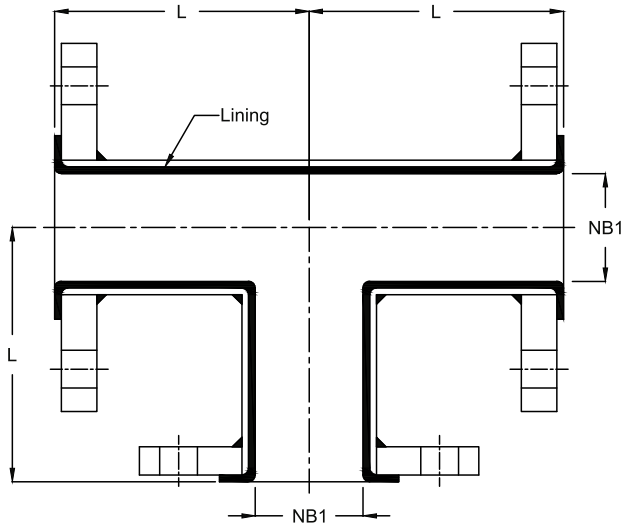
Dimension detail			
NB1	NB2	L	T
150	50	229	54
150	80	229	54
150	100	229	54
200	80	279	54
200	100	279	54
200	150	279	54
250	100	305	54
250	150	305	54
250	200	305	54
300	150	356	54
300	200	356	54
350	300	406	60

**Specification:**

Body: • ASTM A234 Gr. WPB (Steel Fabricated)  
 • Cast Steel ASTM A216 Gr. WCB  
 Flange: ANSI B16.5 / B16.42  
 Optional drilling standard on request:  
 PN-10 / BS-10 Table D,E,F  
 Face To Face: ANSI B16.5 #150  
 Lining: FEP / PFA / HDPE / PP / PVDF  
 Additional Lining: Antistatic PFA  
 Lining Thickness: 3mm to 6mm  
 Inspection & Testing: ASTM F1545-97  
 Hydraulic Test: 29 Kg/Cm<sup>2</sup>  
 Spark Test: 15 Kv



# LINED EQUAL TEE & UN-EQUAL TEE



Dimension detail			
Size			
NB1	Inch	NB2	L
25	1"	25	89
40	1½"	40	102
50	2"	50	114
50	2"	40	114
50	2"	25	114
80	3"	80	140
80	3"	50	140
80	3"	40	140
80	3"	25	140
100	4"	100	165
100	4"	80	165
100	4"	50	165
100	4"	40	165
100	4"	25	165
150	6"	150	203
150	6"	100	203
150	6"	50	203
200	8"	200	229
250	10"	250	279
300	12"	300	305
350	14"	350	356
400	16"	400	381

**Specification:**

Body: Steel Fabrication ASTM A106 Gr. B Sch. 40  
 Cast Steel ASTM A216 Gr. WCB  
 With Flange as per ASTM A105 / IS 2062  
 Ductile Iron GGG40.3 / ASTM A395.

Flange: ANSI B16.5 / B16.42

Optional Drilling Standard on Request:

PN-10 / BS-10 Table D,E,F

Face To Face: ANSI B16.5 #150

Lining: FEP / PFA / HDPE / PP / PVDF

Additional Lining: Antistatic PFA

Lining Thickness: 3mm to 8mm

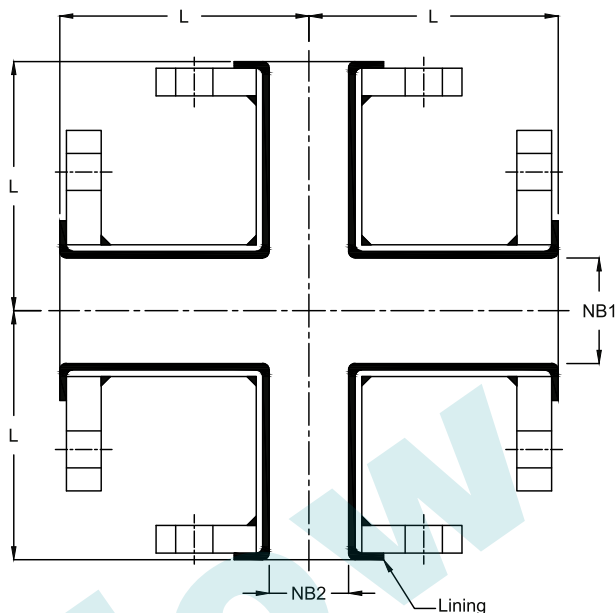
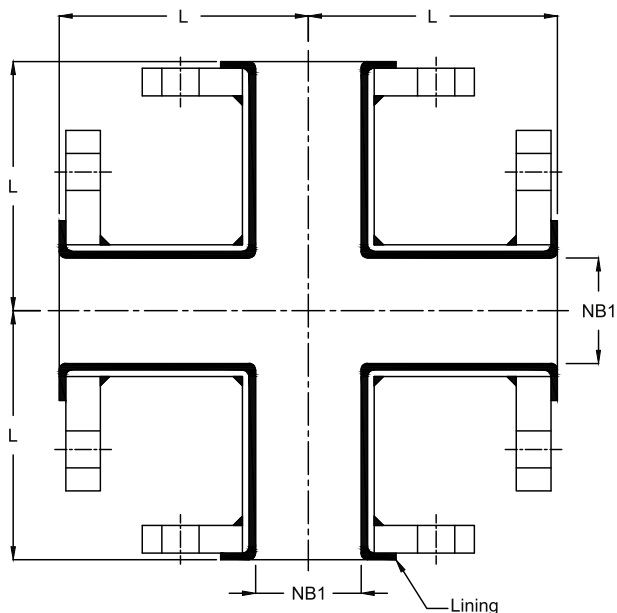
Inspection & Testing: ASTM F1545-97

Hydraulic Test: 29 Kg/Cm<sup>2</sup>

Spark Test: 15 Kv



# LINED EQUAL CROSS & UN-EQUAL CROSS



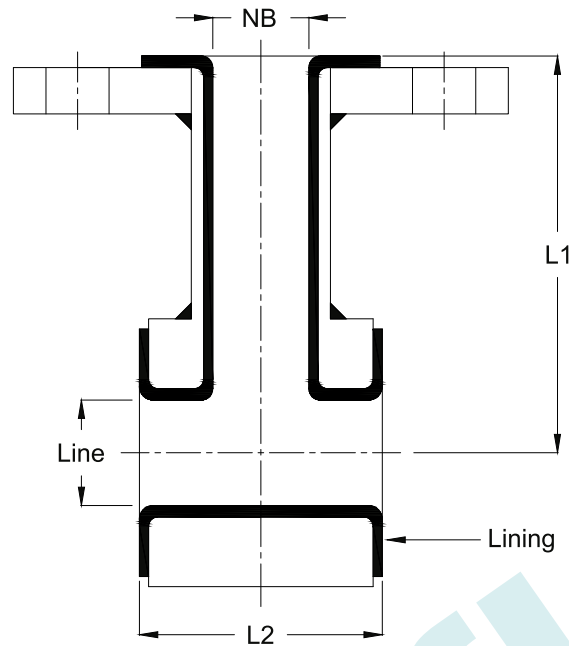
Dimension detail			
Lined Equal Cross			
Size			
NB1	Inch	NB2	L
25	1"	25	89
40	1½"	40	102
50	2"	50	114
50	2"	40	114
50	2"	25	114
80	3"	80	140
80	3"	50	140
80	3"	40	140
80	3"	25	140
100	4"	100	165
100	4"	80	165
100	4"	50	165
100	4"	40	165
100	4"	25	165
150	6"	150	203
150	6"	100	203
150	6"	50	203
200	8"	200	229
250	10"	250	279
300	12"	300	305
350	14"	350	356
400	16"	400	381

**Specification:**

Body: Steel Fabrication ASTM A106 Gr. B Sch. 40  
 Cast Steel ASTM A216 Gr. WCB  
 With Flange as per ASTM A105 / IS 2062  
 Ductile Iron GGG40.3 / ASTM A395.  
 Flange: ANSI B16.5 / B16.42  
 Optional Drilling Standard on Request:  
 PN-10 / BS-10 Table D,E,F  
 Face To Face: ANSI B16.5 #150  
 Lining: FEP / PFA / HDPE / PP / PVDF  
 Additional Lining: Antistatic PFA  
 Lining Thickness: 3mm to 8mm  
 Inspection & Testing: ASTM F1545-97  
 Hydraulic Test: 29 Kg/Cm<sup>2</sup>  
 Spark Test: 15 Kv



# LINED INSTRUMENT TEE



Dimension detail					
Line		NB		L1	L2
MM	Inch	MM	Inch	MM	MM
25	1"	25	1"	89	51
40	1½"	25	1"	102	51
40	1½"	40	1½"	102	76
50	2"	25	1"	114	51
50	2"	40	1½"	114	76
80	3"	25	1"	140	51
80	3"	40	1½"	140	76
100	4"	25	1"	165	51
100	4"	40	1½"	165	76
150	6"	25	1"	203	51
150	6"	40	1½"	203	76
200	8"	25	1"	229	51
200	8"	40	1½"	229	76
250	10"	25	1"	279	51
250	10"	40	1½"	279	76
300	12"	25	1"	305	51
300	12"	40	1½"	305	76

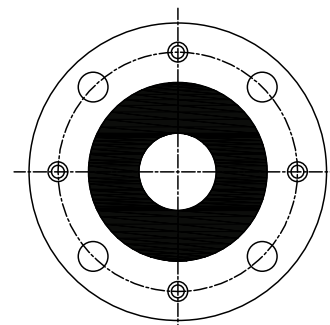
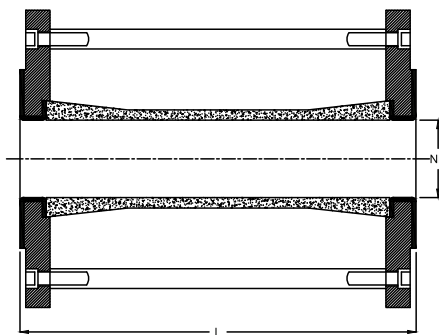
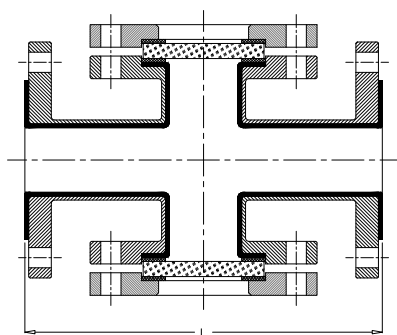
**Specification:**

Body: Steel Fabrication ASTM A106 Gr. B Sch. 40 Pipe  
 Ductile Iron GGG40.3 / ASTM A395  
 Cast Steel ASTM A216 Gr. WCB  
 Flange: ANSI B16.5 / B16.42  
 Face To Face: ANSI B16.5 #150  
 Lining: FEP / PFA / HDPE / PP / PVDF  
 Additional Lining: Antistatic PFA  
 Lining Thickness: 3mm to 8mm  
 Inspection & Testing: ASTM F1545-97  
 Hydraulic Test: 29 Kg/Cm<sup>2</sup>  
 Spark Test: 15 Kv





# LINED DOUBLE WINDOW SIGHT GLASS & FULL VIEW SIGHT GLASS



Dimension Detail for Double Window	
Size (NB)	L (MM)
25	135
40	178
50	190
80	217
100	247
150	275

Dimension Detail	
Size (NB)	L (MM)
25	180
40	190
50	195
80	195
100	195
150	195
200	195

**Specification:**

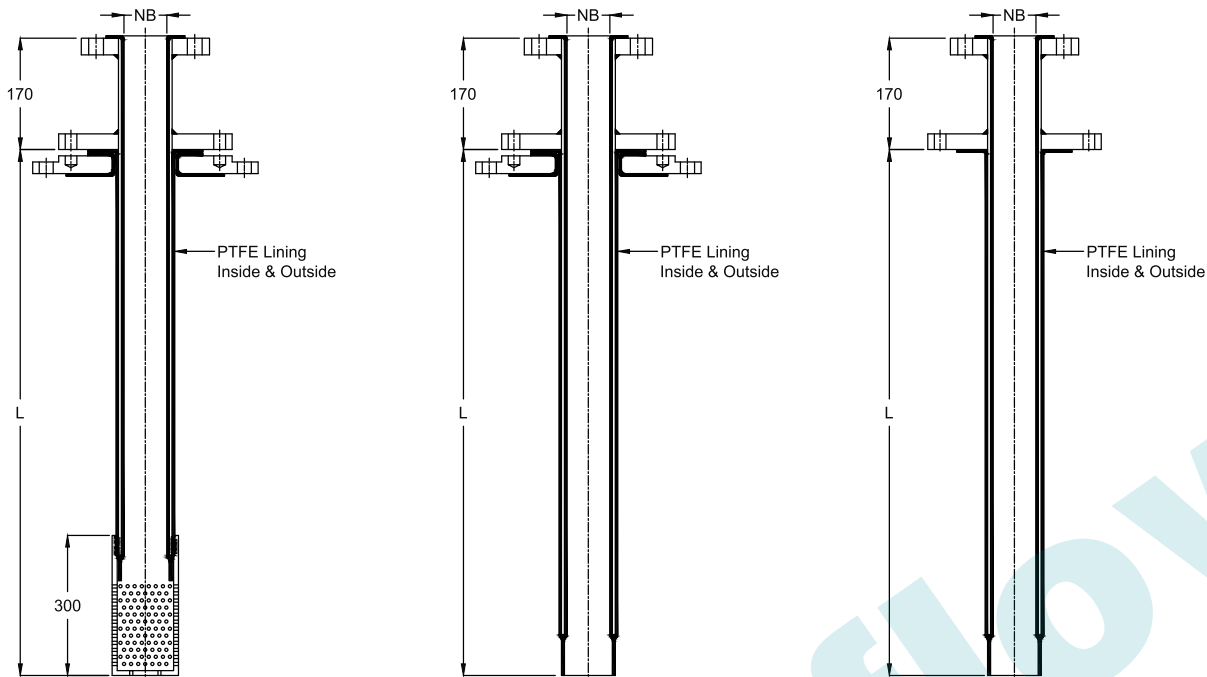
Body: Carbon Steel ASTM A216 Gr. WCB.  
 Flange: ANSI B16.5 150# / B16.42  
 Face To Face: ANSI B16.5 #150 / DIN 3202  
 Lining: FEP / PFA / HDPE / PP / PVDF  
 Lining Thickness: 3mm to 5mm  
 Glass: Toughen  
 Spark Test: 15 Kv

**Specification:**

Frame: Carbon Steel / SS304 / SS316  
 Flange Dimension: ANSI CLASS 150#  
 Lining: PTFE  
 Additional Lining: Antistatic PTFE  
 Glass: Borosilicate



# LINED STRAIGHT DIP PIPE & DIP PIPE SPARGER



Dimension detail for Straight Dip Pipe			
Capacity (Liters)	Dip Pipe Size (NB)	Nozzle Dia (MM)	Length (L) (MM)
63	25	80	300
100	25	80	400
160	25	80	650
250	25	80	800
500	40	100	920
630	40	100	1070
1000	50	100	1200
1600	50	100	1250
2000	50	100	1450
2500	50	100	1500
3000	50	100	1650
4000	50	150	1800
5000	50	150	2200
6300	50	150	2300
8000	80	150	2400
10000	80	200	2500
16000	80	200	2600
20000	80	200	2800

**Specification:**

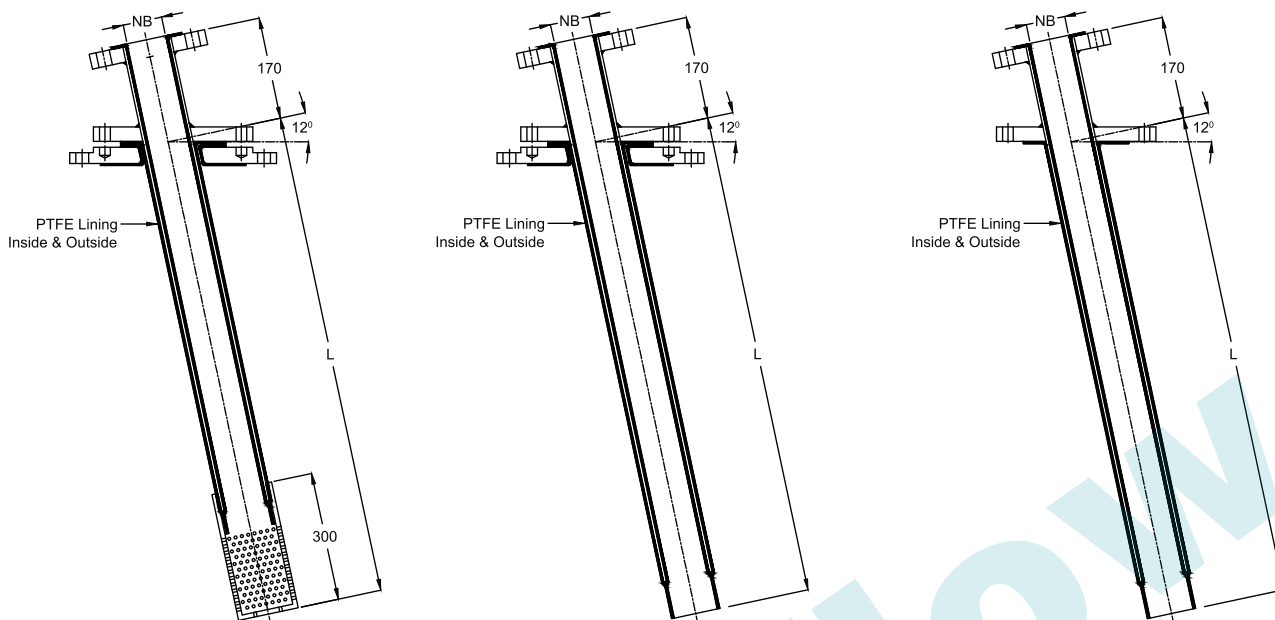
Body: Pipe Seamless Sch. 40/80/160  
 ASTM A106 Gr. B  
 ASTM A312 TP 304 / TP316  
 Flange: IS 2062 / ASTM A105 Gr. B /  
 ASTM A351 Gr. CF8 / CF8M  
 Drilling Standard: ANSI B16.5 #150 / PN-10  
 Lining: PTFE (Inside & Outside)  
 Additional Lining: Antistatic PTFE (Inside & Outside)  
 Hydro Test: 6 Kg/Cm<sup>2</sup>  
 Spark Test Internal : 10 Kv  
 Spark Test External : 5 Kv

**Additional Specification:**

Customizable Dip Pipe size available for GLR  
 25KL, 32KL & 40KL  
 Dip Pipe Size Available: 100 NB / 150NB / 200NB  
 Dip Pipe Sparger provided as per requirement  
 Sparger Length: 200mm and 300mm



# LINED TAPER DIP PIPE & DIP PIPE SPARGER



Dimension detail for Taper Dip Pipe			
Capacity (Liters)	Dip Pipe Size in NB	Nozzle Dia (MM)	Length (L) (MM)
160	25	80	650
250	25	80	800
500	40	100	850
630	40	100	1015
1000	50	200	1275
1600	50	200	1480
2000	50	200	1680
2500	50	200	1725
3000	50	200	1870
4000	50	250	2075
5000	50	250	2300
6300	50	250	2300

**Specification:**

Body: Pipe Seamless Sch. 40/80/160

ASTM A106 Gr. B

ASTM A312 TP 304 / TP316

Flange: IS 2062 / ASTM A105 Gr. B /

ASTM A351 Gr. CF8 / CF8M

Drilling Standard: ANSI B16.5 #150 / PN-10

Dip Pipe Taper: 8° / 12°

Lining: PTFE (Inside & Outside)

Additional Lining: Antistatic PTFE (Inside & Outside)

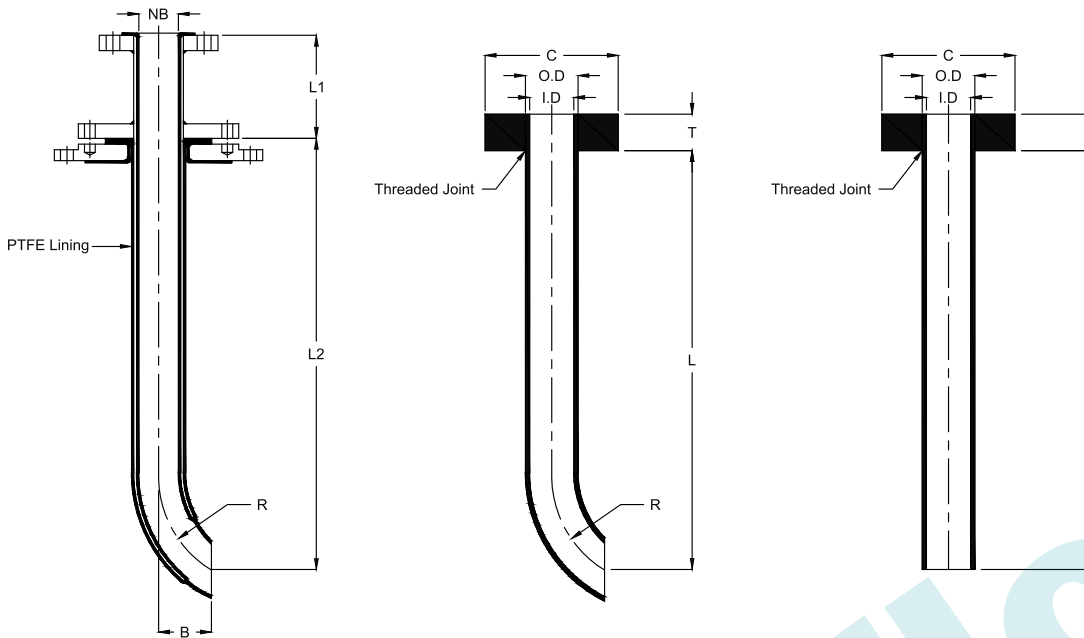
Hydro Test: 6 Kg/Cm<sup>2</sup>

Spark Test Internal : 10 Kv

Spark Test External : 5 Kv



# LINED J TYPE DIP PIPE & DROP TUBE



### Dimension detail for J Type Dip Pipe

Nominal	B	R	L1	L2
Size (NB)				
25	100	150	125	450
40	125	200	125	535
50	150	250	125	685
80	150	400	125	750
100	200	500	150	915

### Dimension detail Solid J Type Drop Tube

Nominal	ID	OD	T	C	R
Dia					
25	25	40	40	73	150
40	35	50	45	92	200
50	50	63	50	125	250
80	70	82	70	158	400
100	93	103	75	215	500

### Specification:

Body: Pipe Seamless Sch. 40

ASTM A106 Gr. B

ASTM A312 TP 304 / TP316

Flange: IS 2062 / ASTM A105 Gr. B /

ASTM A351 Gr. CF8 / CF8M

Drilling Standard: ANSI B16.5 #150 / PN-10

Lining: PTFE (Inside & Outside)

Additional Lining: Antistatic PTFE (Inside & Outside)

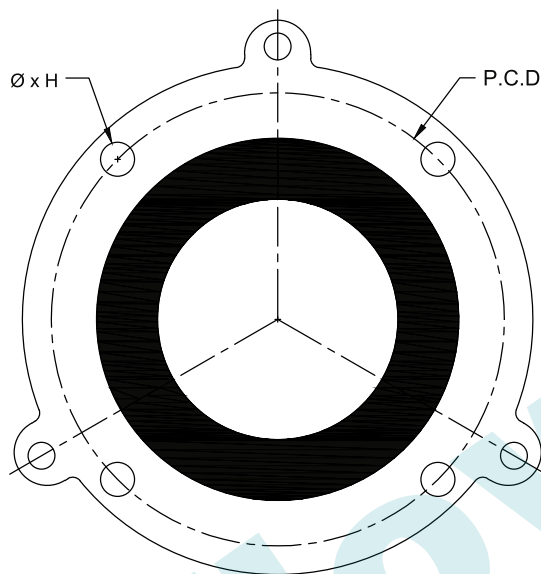
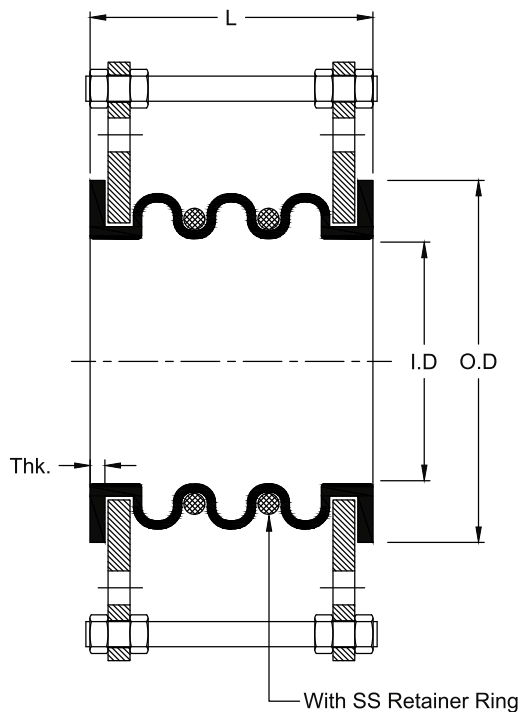
Hydro Test: 6 Kg/Cm<sup>2</sup>

Spark Test Internal : 10 Kv

Spark Test External : 5 Kv



# PTFE HIGH PRESSURE BELLOWS



Dimension detail				
Size (NB)	O.D	I.D	L	THK.
25	50	25	100	6
40	70	40	100	6
50	90	50	100	6
80	125	75	100	7
100	150	100	100	7
150	215	150	150	8
200	270	200	150	8
250	320	250	150	8
300	381	300	150	9
400	470	400	150	9
450	533	450	150	9
600	692	600	150	9

**Specification:**

Body: PTFE / CFT  
 Flange: Carbon Steel / SS304 / SS316  
 Design Pressure: 10 Kg/Cm<sup>2</sup>  
 Operating Pressure: 5-6 Kg/Cm<sup>2</sup>  
 Operating Temperature: 100°C-130°C  
 Vacuum: Full  
 Convoulation: 3

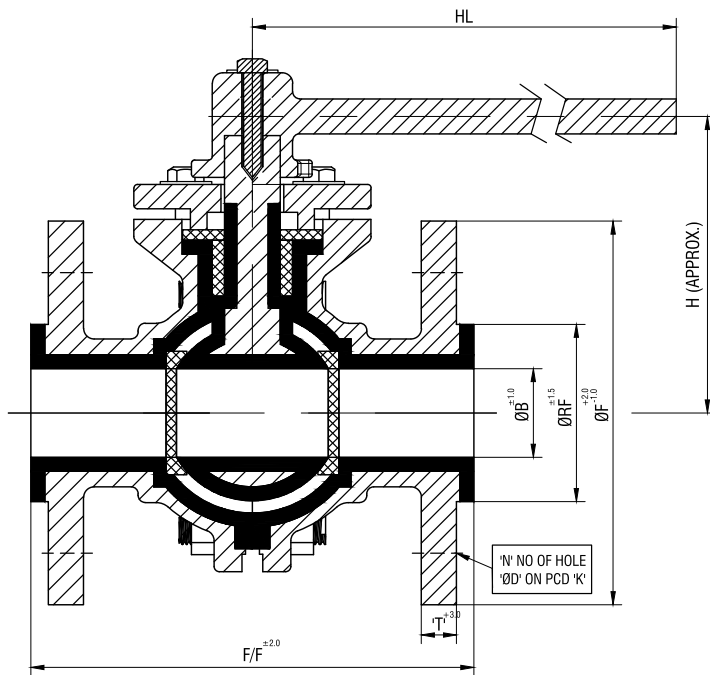
**Additional Specification:**

Length will be provided as required, No. of convolution shall change accordingly available maximum length 300 mm

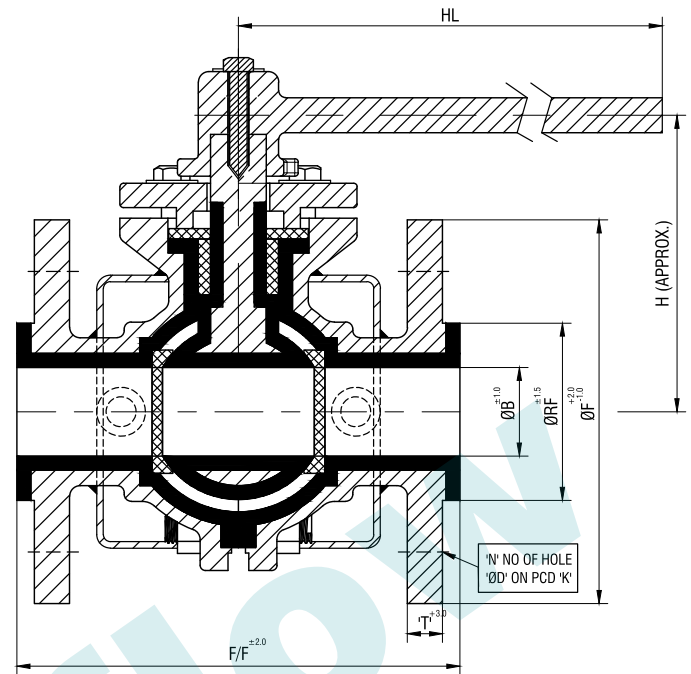




# LINED BALL VALVE



**BALL VALVE**



**JACKETED BALL VALVE**

All Dimensions are in mm Unless Otherwise Specified

Size	F/F	ØF	ØB	ØRF	Thick.(T)	K	N	ØD	HL	H	Torque
15	108	90	12.5	34.9	10	60.3	4	15.9	180	75	10-15Nm.
25	127	110	25.4	50.8	11.6	79.4	4	15.9	225	83	20-30Nm.
40	165	125	38	73	14.7	98.4	4	15.9	300	111	35-45Nm.
50	178	150	51	92.1	16.3	120.7	4	19.1	320	123	45-55Nm.
65	190	175	66	104.8	17.5	139.7	4	19.1	320	140	55-75Nm.
80	203	190	76	127	19.5	152.4	4	19.1	400	160	75-90Nm.
100	229	230	102	157.2	24.3	190.5	8	19.1	410	166	100-125Nm.
150	267	280	152	215.9	25.9	241.3	8	22.0	530	240	175-200Nm.

**Specification:**

Body (Split Type): ASTM A 216 Gr. WCB / ASTM A 321 Gr. CF8

Ball : ASTM A 216 Gr. WCB / ASTM A 321 Gr. CF8

Body Lining & Ball Lining : FEP / PFA / HDPE

Seat Ring, Bearing Bush & PTFE Diaphragm : PTFE

Cover & Lever : ASTM A 216 Gr. WCB / ASTM A 321 Gr. CF8

Lever Bolt, Body Joint Stud & Nut : MS / SS304

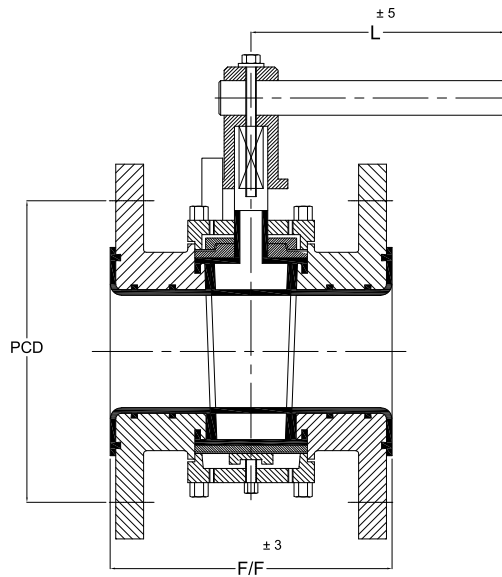
Lining Thickness : 3 - 5 mm

Hydro Test : Body 15 Kg / Cm<sup>2</sup> - Seat 11 Kg / Cm<sup>2</sup>

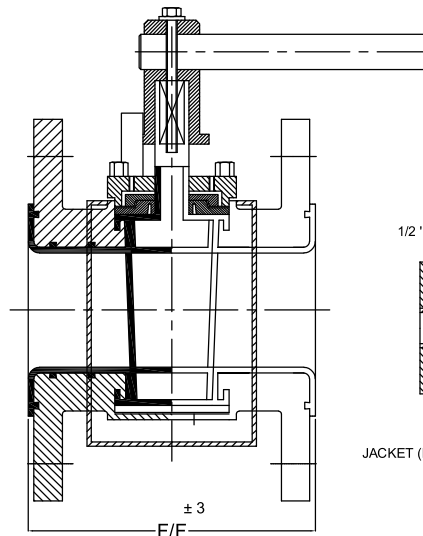
Spark Test : Body & Ball 20 KV



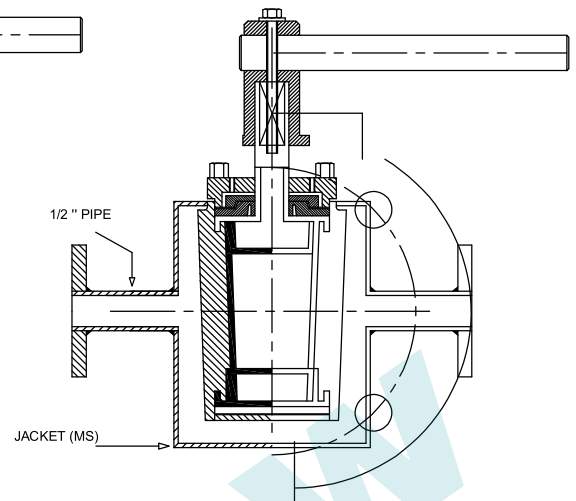
# LINED PLUG VALVE



**PLUG VALVE**



**JACKETED PLUG VALVE**



Dimension Detail (ASA 150#)									
Size		R/F	P.C.D.	ØD±2	T	No. of Hole	Hole Dia.	F/F±3	H±5
NB	Inch					H	Ø		
25	1"	50.8	79.4	108.0	14.5	4	16.0	127	300
40	1½"	73.0	98.4	127.0	17.5	4	16.0	165	400
50	2"	92.1	120.7	152.4	19.5	4	19.0	178	470
80	3"	127.0	152.4	190.5	24.0	4	19.0	203	500
100	4"	157.2	190.5	228.6	24.0	8	19.0	229	600
150	6"	157.2	190.5	228.6	24.0	8	19.0	267	Gear

**Specification:**

- Body with Lining : ASTM A216 Gr. WCB (PFA/FEP Lined)
- Plug with Lining : ASTM A216 Gr. CF8 (PFA/FEP Lined)
- Top Cover : DI A395
- Flexible Diaphragm : PTFE
- Diaphragm Backup : SS 304
- Thurst Washer : SS 304
- Bolt : CS
- GUB Screw : SS 304
- Lever Assembly : ASTM A216 Gr. WCB
- Body : 15 KG/CM<sup>2</sup> (Hydro)
- Seat : 11 KG/CM<sup>2</sup> (Hydro)  
6 KG/CM<sup>2</sup> (Pneumatics)
- Jacket : 6 KG/CM<sup>2</sup> (Hydro)
- Spark Test : 15 KV. DC.

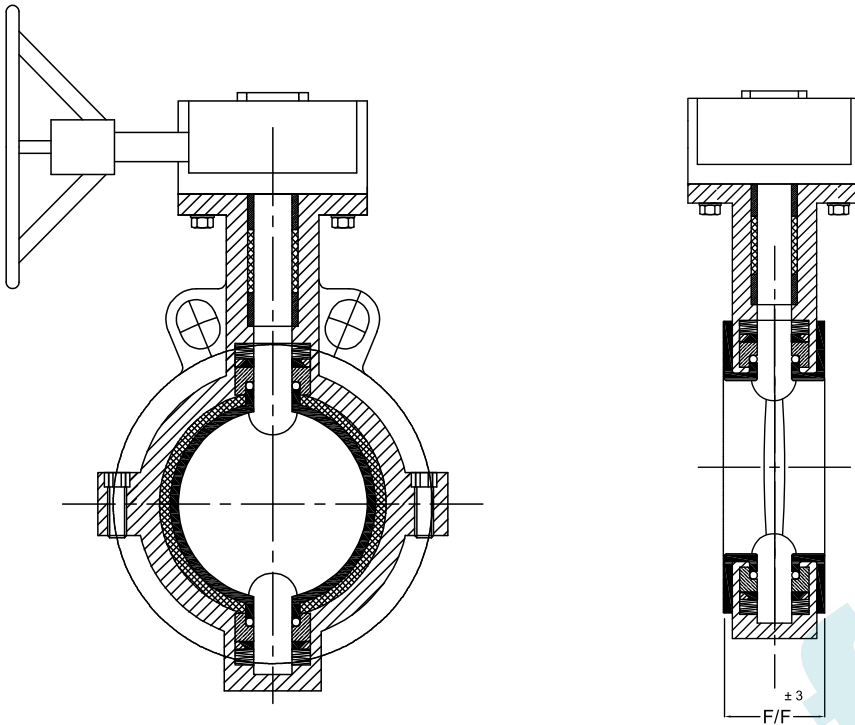
**Specification: (Jacketed)**

- Body : Ductile Iron
- Plug : WCB / ASTM A351 Fr. CF8
- Top Cover : Ductile Iron
- Bottom Cover : Ductile Iron
- Diaphragm Backup : SS304
- Flexible Diaphragm : PTFE
- Thurst Washer : SS304
- Bolt : MS
- GUB Screw : SS
- Lever Assembly : ASTM A216 Gr. WCB
- Gasket : PTFE

- Gasket Backup : SS304
- Pushar Bolt & Nut : SS
- Lining Material : FEP / PFA
- Lining Thickness : 3mm to 5mm
- End Connection : ANSI B 16.5, ASA 150#
- Inspection & Testing : ASTM F1545-97
- Hydro Test : (Body) 15 KG/CM<sup>2</sup>  
(Seat) 11 KG/CM<sup>2</sup>
- Pneumatic Test : (Seat) 6 KG/CM<sup>2</sup>
- Spark Test : 15 KV



## LINED BUTTERFLY VALVE



### Dimensions Details

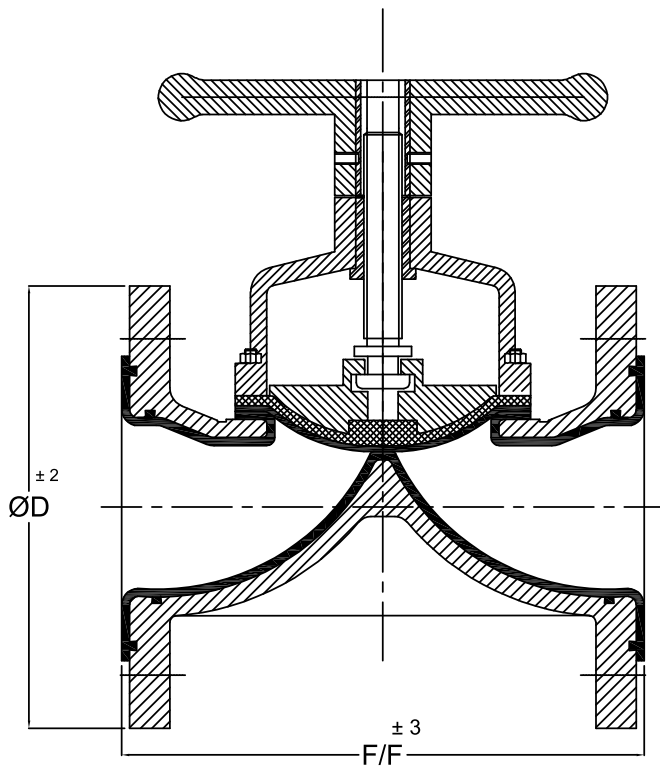
Size	F/F
150NB	55
200NB	62
250NB	68
300NB	78

### Specification:

Wafer Type Body : WCB/DI/CF8/CF8M  
 Body Liner (Sleeve) : PFA/FEP/PTFE  
 Disc with Integral Shaft : WCB/CF8/CF8M  
 Elastomer Backup : Silicon Rubber  
 'O' Ring : Viton  
 Spear Bush : Glass Filled PTFE  
 Wedge Ring : PTFE  
 Thrust Washer : SS 304  
 Guide Bush : SS 304  
 Bolt : SS 304  
 Disc Spring : Spring Steel Nickel Plated  
 Gland Packing : PTFE  
 Testing Standard : BS EN 12266 - 1&2  
 Body : 10 KG/CM<sup>2</sup> (Hydro)  
 Seat : 6 KG/CM<sup>2</sup> (Hydro)  
           6 KG/CM<sup>2</sup> (Pneumatics)  
 Spark Test : 15 KV. DC.  
 Lining Thickness : Minimum 3 mm



## LINED DIAPHRAGM VALVE



Dimension Detail (ASA 150#)

Size		R/F	P.C.D.	$\varnothing D \pm 2$	T	No. of Hole	Hole Dia.	F/F $\pm 3$
NB	Inch					H	$\varnothing$	
25	1"	50.8	79.4	108.2	14.5	4	16.0	133
40	1½"	73.0	98.4	127.0	17.5	4	16.0	165
50	2"	92.1	120.7	152.4	19.5	4	19.0	196
80	3"	127.0	152.4	190.5	24.0	4	19.0	260
100	4"	157.2	190.5	228.6	24.0	8	19.0	311
150	6"	215.9	241.3	279.5	25.5	8	22.0	412



### Specification:

Body : ASTM A216 Gr. WCB

Bonnet : DI / WCB

Spindle : SS304

Compressor : DI / WCB

Hand Wheel : DI / WCB

Diaphragm : Pipe + Neoprene Rubber

Stud & Nut : SS

Lining Material : FEP / PFA

Lining Thickness : 3 mm to 5 mm

End Connection : ANSI B 16.5, ASA 150#

Design Standard : BS 5156 (EN 13397)

Inspection & Testing : ASTM F1545-97

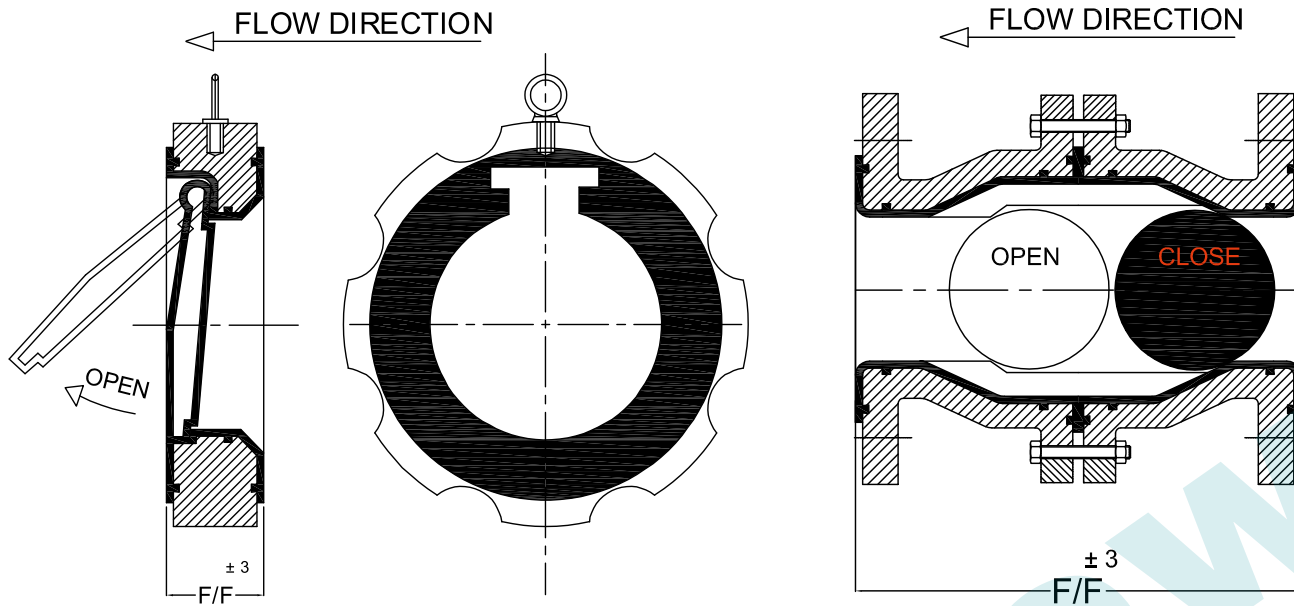
Hydro Test : (Body) 15 KG/CM<sup>2</sup>

(Seat) 11 KG/CM<sup>2</sup>

Pneumatic Test : (Seat) 6 KG/CM<sup>2</sup>

Spark Test : 15 KV

# LINED NON RETURN VALVE



Dimensions Details	
Size	F/F (mm)
40NB	34
50NB	43
80NB	46
100NB	52
150NB	58
200NB	60
250NB	68

Dimensions Details							
Size	R/F	P.C.D.	D	T	No. of Hole	Hole Dia.	F/F
NB					(N)	(Ø)	(MM)
25	50.8	79.4	108.0	14.5	4	15.9	127
40	73.0	98.4	127.0	17.5	4	15.9	165
50	92.1	120.7	152.4	19.5	4	19	178
80	127.0	152.4	190.5	24	4	19	203
100	157.0	190.5	228.6	24	8	19	228

**Specification:**

Lined Body : DI (PFA Lined)  
 Lined Disc : C.S. (PFA Lined)  
 Eye Bolt : C.S.  
 Testing Standard : BS EN 12266-1&2  
 Body : 15 KG/CM<sup>2</sup> (Hydro)  
 Seat : 10 KG/CM<sup>2</sup> (Hydro)  
           2 KG/CM<sup>2</sup> (Back Pressure)  
 Spark Test : 15 KV. DC.  
 Lining Thickness : Minimum 3 mm

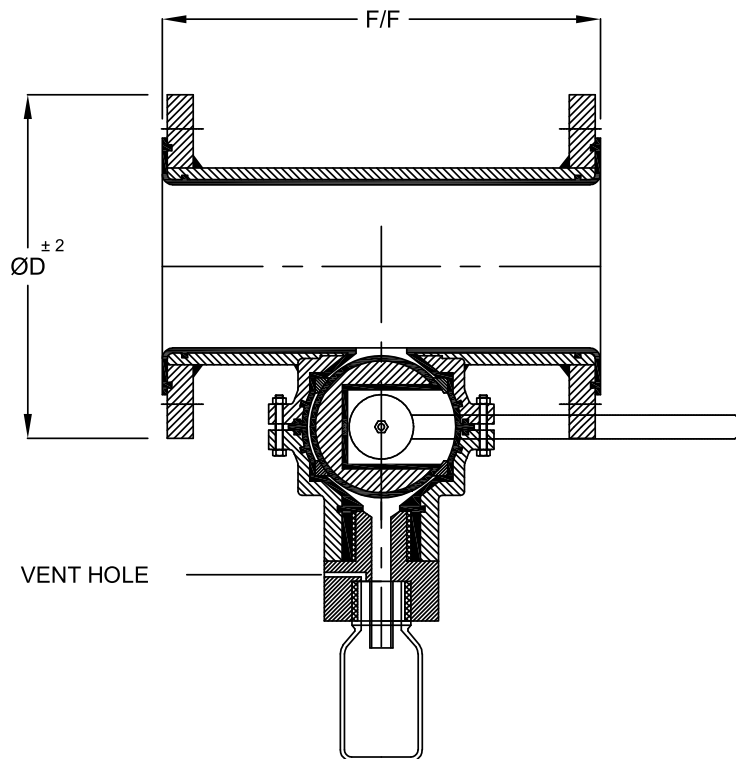
**Specification:**

Body : Carbon Steel  
 Ball : PTFE  
 Nut & Bolt : MS  
 Flange : ANSI B16.5 150# / B16.42  
 Lining : FEP / PFA  
 Lining Thickness : 3mm to 5mm  
 Hydro Test (Body) : 15 Kg  
 Hydro Test (Seat) : 10 Kg  
 Back Pressure : 2 Kg  
 Spark Test : 15 Kv





## LINED SAMPLING VALVE



Dimension Detail (ASA 150#)

Size		R/F	P.C.D.	ØD±2	T	No. of Hole	Hole Dia.	F/F±3
NB	Inch					H	Ø	
25	1"	50.8	79.4	108.0	14.5	4	16.0	250
40	1½"	73.0	98.4	127.0	17.5	4	16.0	250
50	2"	92.1	120.7	152.4	19.5	4	19.0	250
80	3"	127.0	152.4	190.5	24.0	4	19.0	250
100	4"	157.2	190.5	228.6	24.0	8	19.0	250

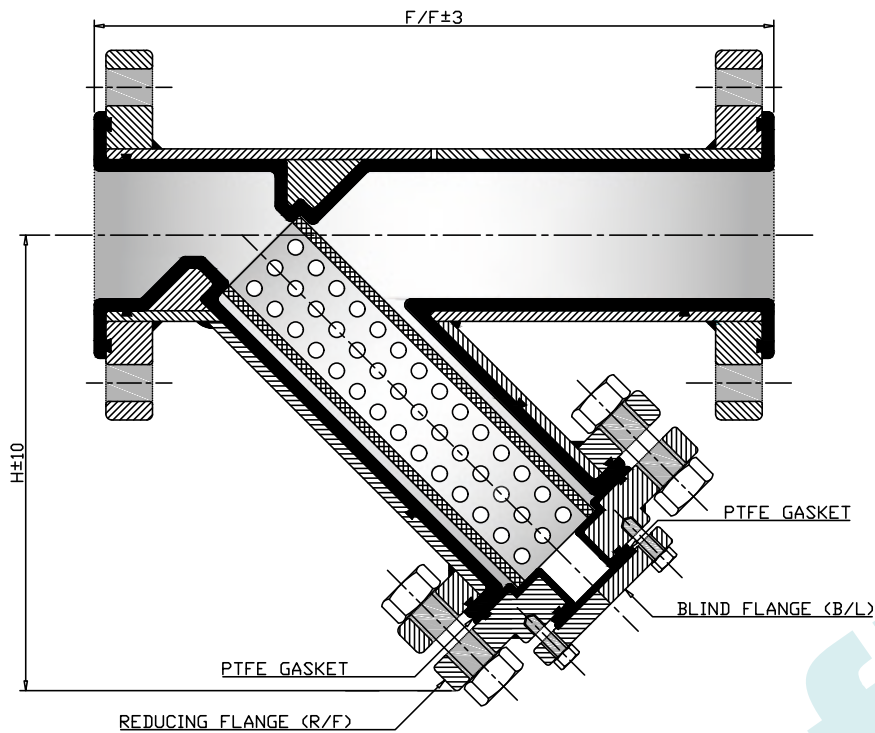
### Specification:

Body : ASTM A216 Gr. WCB  
 Integral Ball : ASTM A216 Gr. CF8  
 Adapter : PTFE  
 Seat Ring : PTFE  
 Sampling Bottle : Borosilicate Glass  
 (Single Use Sample Capacity 50 ml)  
 Pipe Body : ASTM A106 Gr. B, SCH. 40  
 Flange : IS 2062  
 Nut / Bolt : MS

Lining Material : FEP / PFA  
 Lining Thickness : 3mm to 5mm  
 End Connection : ANSI B 16.5, ASA 150#  
 Design Standard : BS EN 12266-1&2  
 Inspection & Testing : ASTM F1545-97  
 Hydro Test : (Body) 15 KG/CM<sup>2</sup>  
 (Seat) 11 KG/CM<sup>2</sup>  
 Pneumatic Test : (Seat) 6 KG/CM<sup>2</sup>  
 Spark Test : 15 KV



# LINED Y TYPE STRAINER



Dimension Detail (ASA 150#)

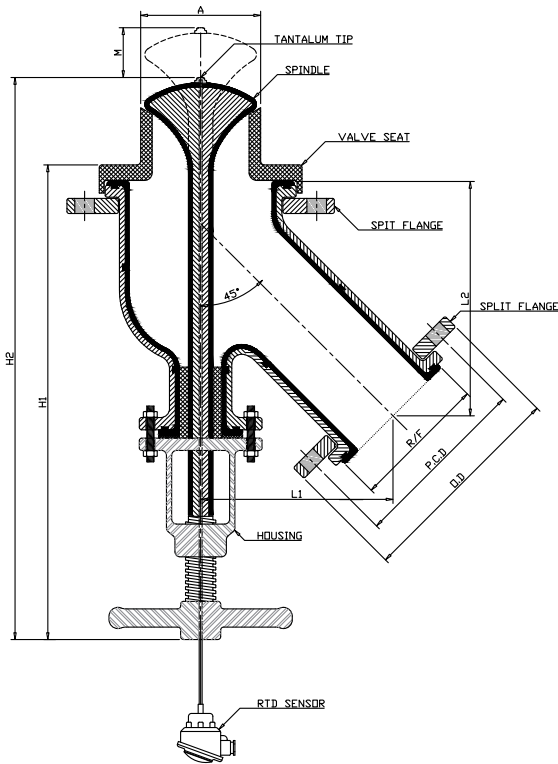
Size	R/F	P.C.D.	OD	T	No. of Hole	Hole Dia.	F/F±3	H±10	R/F	B/L	
NB	Inch				H	Ø			NB	NB	
25	1"	50.8	79.4	108.2	14.5	4	15.9	190	128	--	25
40	1½"	73.0	98.4	127.0	17.5	4	15.9	260	190	40x25	25
50	2"	92.1	120.7	152.4	19.5	4	19.0	284	203	50x25	25
80	3"	127.0	152.4	190.5	24.0	4	19.0	348	257	80x25	25
100	4"	157.2	190.5	228.6	24.0	8	19.0	415	307	100x25	25
150	6"	215.9	241.3	279.5	25.5	8	22.2	508	370	150x25	25
200	8"	269.9	298.5	342.9	29.0	8	22.2	597	460	200x25	25

**Specification:**

- Body : Ductile Iron GGG40.3 / ASTM A395
- Reducing Flange : Carbon Steel ASTM A216 Gr. WCB / IS 2062
- Filter Element : PTFE
- Drain Blind : Carbon Steel ASTM A216 GR. WCB / IS 2062
- Bolt : MS
- Lining Material : FEP / PFA
- Lining Thickness : 3mm to 5mm
- Inspection & Testing : ASTM F1545-97
- Hydro Test : 15 KG/CM<sup>2</sup>
- Spark Test : 15 KV.



# LINED FLUSH BOTTOM VALVE



Dimension detail							
Standard Size		A	M	L1	L2	H1	H2
100 (PN10) X 80 (ASA 150#)		99	40	150	214	450	490
150 (PN10) X 100 (ASA 150#)		149	40	191	270	490	550

Flange Drilling Detail							
Size		R/F	P.C.D.	OD	T	No. of Hole	Hole Dia.
NB	Inch					H	Ø
ASA 150#							
80	3"	127.0	152.4	190.5	24.0	4	19.0
100	4"	157.2	190.5	228.6	24.0	8	19.0
PN 10							
100	4"	-----	180	220	22	8	18
150	6"	-----	240	285	24	8	22

**Specification:**

- Body : Cast Steel ASTM A216 Gr. WEB  
ASTM A351 Gr. CF8/ASTM Gr. CF8M
- Lining Material : FEP/PFA
- Gland : Gunmetal
- Seat Ring & Gland : Expanded PTFE + Pure PTFE
- Valve Seat : Pure PTFE/GFT
- Gear/Hand Wheel : SS
- End Nut & Washer : SS
- Hex Nut & Head Screw : SS
- Ext. Spindle Screw : CS/SS
- Flange : ANSI B16.5/ANSI B16.2
- Drilling : ASA 150# / PN 10 / Table BS-10
- Face to Face : Mfg. Standard
- Lining Thickness : 3mm to 5mm
- Testing Standard : API 598 / PN 10
- Hydro Test - Body : 20 Kg/CM<sup>2</sup>
- Hydro Test - Seat : 11 Kg/CM<sup>2</sup>
- Spark Test : 20 KV



# Certificate

SWISS CERT Pvt. Ltd. hereby Certify that the Quality Management System of

## TRANSFLOW PROCESS SYSTEMS PVT. LTD.

SARVODAYA ESTATE, AT. KHATAMBA, PO. ANKHOL, TAL. WAGHODIA, DIST. VADODARA – 390 019, GUJARAT, INDIA

has been assessed and found to be in accordance with the requirements of

## Quality Management System ISO 9001:2015

and scope of activities are detailed below as per IAF/NACE Code :14/22.2

MANUFACTURE, EXPORT & SUPPLY OF PTFE & PTFE / FEP/ PFA LINED PIPES, FITTINGS, VALVES AND ITS COMPONENTS.

This Certificate is valid for a period of Three years from: 03.02.2022 until: 02.02.2025  
And remains valid Subject to satisfactory completion of surveillance audits

Certificate Number: 311935

Rev. No: 00



*[Signature]*  
Director

SWISS CERT PVT. LTD.

412, BEST SKY TOWER, NETAJI SUBHASH PLACE, PITAMPURA, DELHI - 110 014, INDIA

This certificate is the property of SWISS CERT PRIVATE LIMITED and shall be returned upon request.

All Interested parties are advised to verify the validity of the certificate from SWISSCERT ([info@swisscertindia.com](mailto:info@swisscertindia.com))

# CERTIFICATE OF REGISTRATION



Transflow Process Systems Private Ltd

SARVODAYA ESTATE, AT: KHATAMBA,  
PO: ANKHOL, TAL: WAGHODIA,  
DIST: VADODARA - 390 019.



This is to certify that the Product Requirements of the above organization has been assessed under ASTM – F 1545 – 2003 Standard Specifications for Teflon Lined Metal Pipes, Fittings & Ball Valves with Chemours (DuPont) PTFE Fluoropolymer Type 669-N&PFA-451HP By (Infinity Inspection Services Certification) For

## TYPE TEST

Products : PTFE & PFA Lined Metal Pipes, Fittings & Ball Valves

Product Description as per Annexure-1

Certificate No. : IIS/TA/2122/014

Certificate Date : 25th December 2020

EAC Code : 18

**NOTE** : This certificate is only valid for Chemours (DuPont) PTFE Fluoropolymer Type 669-N & PFA-451HP used for lining the Pipes & Fittings

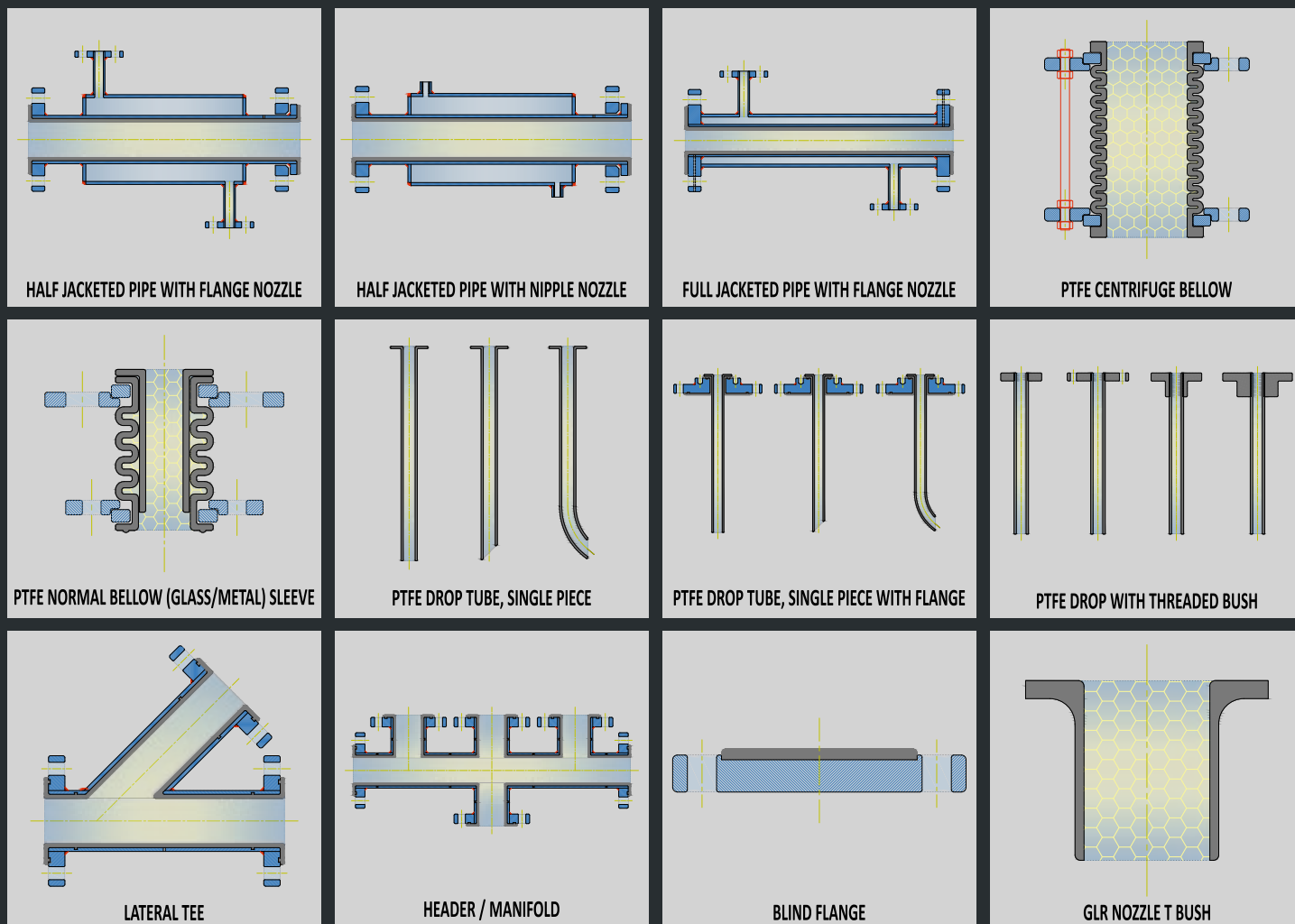
Managing Director

*[Signature]*

For verification of this certificate, visit at [www.tcs-group.in](http://www.tcs-group.in)

This Certificate is subject to terms and conditions overlaid. Any significant change in design or construction may render this Certificate invalid.

The validity date relates to the Type Examination Certificate and not to the approval of equipment/systems installed.



# Transflow

## PROCESS SYSTEMS

(An ISO 9001 : 2015 Certified Company)

**Transflow Process Systems Pvt. Ltd.**

3/2, Ganesh Industrial Estate, New VIP Ring Road  
Near Raghukul School Lane, Vadodara - 390019, Gujarat (India)

Mobile : +91-9099029622

E-mail : [sales@transflow.in](mailto:sales@transflow.in)

Web : [www.transflow.in](http://www.transflow.in)

